



GAT MONTHLY MEMBERSHIP PROGRESS REPORT

Results as of: 4/30/2023

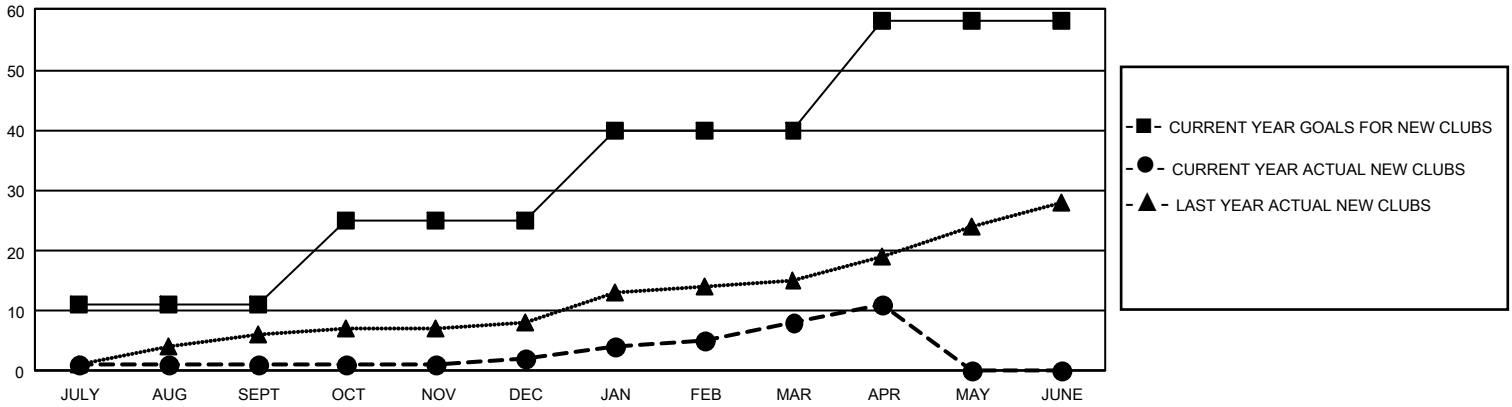
GMT Constitutional Area 4, Group F

REPORT DOES NOT INCLUDE CLUBS IN UNDISTRICTED AREAS.

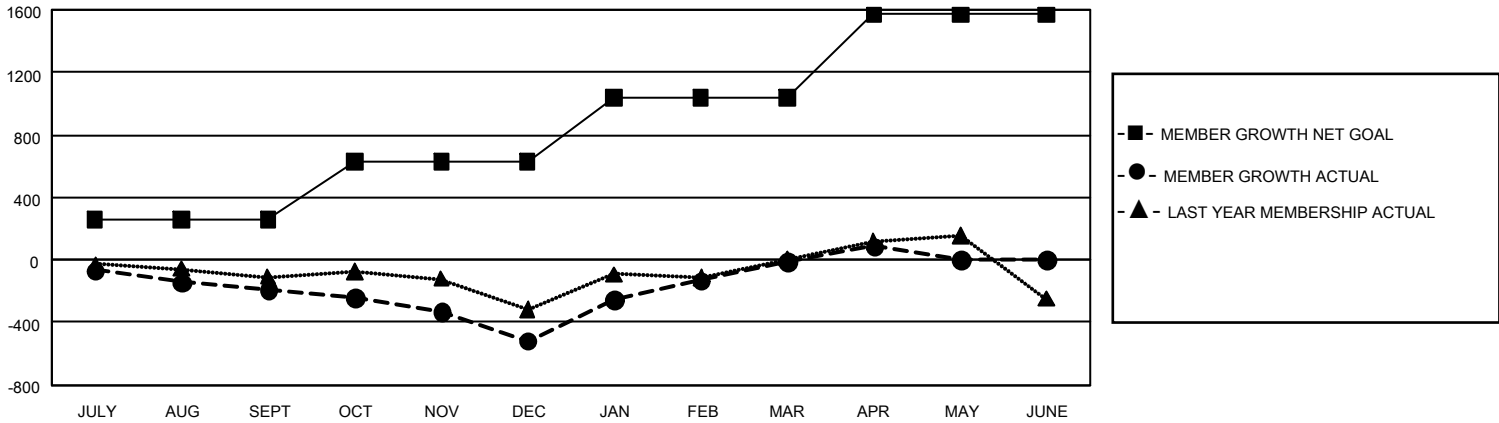
Clubs			
RESULTS FOR 2022-2023			
QUARTER	NEW CLUB GOAL	NEW CLUBS	DROPPED CLUBS
JULY/AUG/SEPT	33	1	6
OCT/NOV/DEC	42	1	4
JAN/FEB/MAR	45	6	1
APR/MAY/JUNE	54	3	0

Members			
RESULTS FOR 2022-2023			
QUARTER	MEMBER GROWTH NET GOAL	MEMBER GROWTH ACTUAL	DROPPED MEMBERS ACTUAL (including transfers)
JULY/AUG/SEPT	257	623	721
OCT/NOV/DEC	374	1,005	1,215
JAN/FEB/MAR	409	1,233	647
APR/MAY/JUNE	531	358	233

GOALS AND ACTUAL NEW CLUBS CUMULATIVE



GOALS AND ACTUAL MEMBERS CUMULATIVE



DROPPED CLUBS: 11	914 CLUBS OF 1,572 ADDED 1 OR MORE NEW MEMBERS	<u>GENDER DISTRIBUTION</u>	
		MALE	29,657 (68.24%)
<u>DROPPED MEMBERS</u>		FEMALE	13,798 (31.75%)
DECEASED	386	NON BINARY	0 (0.00%)
CLUB CANCELLED	84	PREFER NOT TO ANSWER	6 (0.01%)
OTHER	2,346	TOTAL FAMILY UNIT MEMBERS	3,623
TOTAL	2,816	FAMILY MEMBERS PAYING HALF DUES	1,879

[CLICK HERE FOR CUMULATIVE MEMBERSHIP DATA](#)